

Philadelphia Botanical Club's Trip to Croydon Woods Nature Preserve - Field Trip Report

Date: May 17, 2024

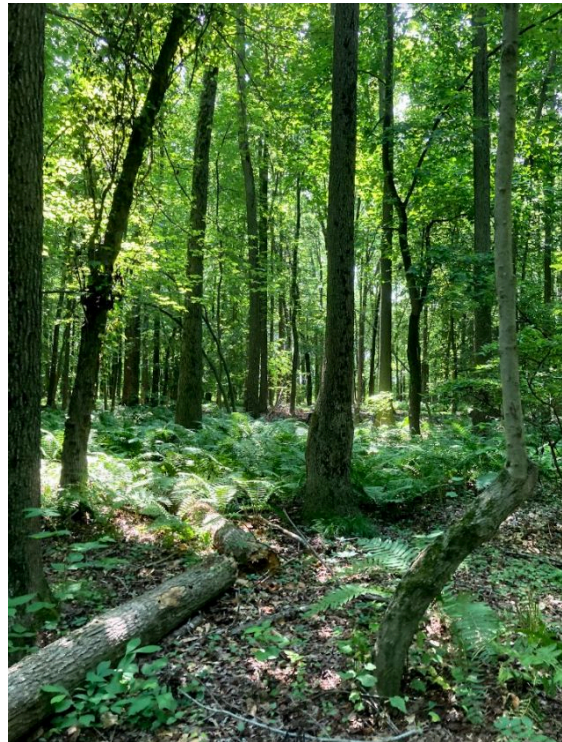
Prepared by Andrew Conboy

Overview:

The Philadelphia Botanical Club's trip to Croydon Woods Nature Preserve in Bucks County, PA, took place on Saturday, May 17th from 10am to roughly 2pm. There were about thirty participants who joined the trip. The trip was led by Tyler Kovacs, Senior Conservation Biologist at Heritage Conservancy, and Andrew Conboy, PBC member.

This preserve is one of the last remaining coastal plain forests in Pennsylvania. The Atlantic coastal plain biogeographic region in Pennsylvania is limited to the very southeastern portion of the state and is characterized by low elevation, relatively flat terrain, and sandy, usually-acidic soils. Croydon Woods Nature Preserve is an 80-acre forested property in Bristol Township. From the [Heritage Conservancy's website](#), "This beautiful forest has come back to ecological life after major mediation and then trash cleanup and habitat rebuilding under the care of Heritage Conservancy. [Read more](#) about the work that brought these woods back."

During the trip, we explored the lowland willow oak, red maple, black gum forest and a smaller upland oak forest. Tyler Kovacs led the group through these areas and pointed out several unique plants or populations along the way. These included a nice stand of *Chasmanthium laxum*, a few *Tipularia discolor* individuals, a planted cluster of *Chamaecyparis thyoides* grown from NJ-ecotype seed at Pinelands Nursery, and several hybrid *Quercus* trees. Some state-listed species including *Quercus phellos* (S2) and *Magnolia virginiana* (S2), were relatively abundant throughout. Threats to the preserve include invasive species, fire suppression, illegal off-road ATV use, and lack of resources for land management.



Map of Areas Covered:

Map of overall iNaturalist observations. Points outside of the preserve are largely due to GPS accuracy errors.



Full Plant List - [iNaturalist link](#):

Trees:

Fagus grandifolia
Acer rubrum
Acer platanoides
Gleditsia triacanthos
Nyssa sylvatica
Castanea dentata
Sassafras albidum
Liriodendron tulipifera
Magnolia virginiana
Magnolia tripetala
Fraxinus pennsylvanica
Liquidambar styraciflua
Prunus serotina
Ilex opaca
Cornus florida
Catalpa sp.
Morus alba
Carya tomentosa
Carya glabra
Chamaecyparis thyoides
(planted)
Quercus alba
Quercus phellos
Quercus velutina
Quercus coccinea
Quercus rubra
Quercus palustris
Quercus stellata
Quercus × *filialis* (Q.
phellos x Q. velutina)?

Shrubs:

Viburnum dentatum
Viburnum recognitum
Viburnum acerifolium
Viburnum prunifolium
Ilex verticillata
Lindera benzoin
Symphoricarpos
orbiculatus
Elaeagnus umbellata

Rubus allegheniensis
Rubus phoenicolasius
Sambucus canadensis
Rosa multiflora
Clethra alnifolia
Vaccinium pallidum
Vaccinium spp.
Ligustrum sp.

Ferns:

Woodwardia areolata
Osmundastrum
cinnamomeum
Osmunda spectabilis
Onoclea sensibilis
Amauropelta
noveboracensis
Osmunda claytoniana
Dennstaedtia punctilobula

Others:

Smilax glauca
Smilax rotundifolia
Carex intumescens
Carex grayi
Carex blanda
Carex lurida
Carex swanii
Carex debilis
Carex folliculata
Carex albicans var.
emmonsii
Dichantherium
clandestinum
Toxicodendron radicans
Goodyera pubescens
Sagittaria latifolia
Parthenocissus quinifolia
Artemisia vulgaris
Galium aparine
Alliaria petiolata
Saururus cernuus

Maianthemum canadense
Maianthemum racemosum
Lonicera japonica
Microstegium vimineum
Persicaria virginiana
Asclepias syriaca
Sisyrinchium angustifolium
Wisteria sp.
Verbascum thapsus
Vitis spp.
Clematis terniflora
Boehmeria cylindrica
Campsis radicans
Dioscorea villosa
Chasmanthium laxum
Symplocarpus foetidus
Viola sp.
Poa spp.
Narcissus sp.
Chelone sp.
Medeola virginiana
Atrichum sp.
Hedera helix
Juncus effusus
Apocynum cannabinum
Lycopus sp.
Glyceria striata
Potentilla simplex
Mitchella repens
Lilium superbium
Polygonatum biflorum
Leucobryum glaucum
Solidago rugosa
Euonymus fortunei
Tradescantia virginica
Persicaria perfoliata
Lespedeza cuneata
Lespedeza spp.
Oxalis sp.
Dendrolycopodium sp.
Veronica serpyllifolia
Veronica peregrina

Chelone glabra

Trifolium repens

Daucus carota

Verbena urticifolia

Plantago lanceolata

Eupatorium serotinum

Circaea canadensis